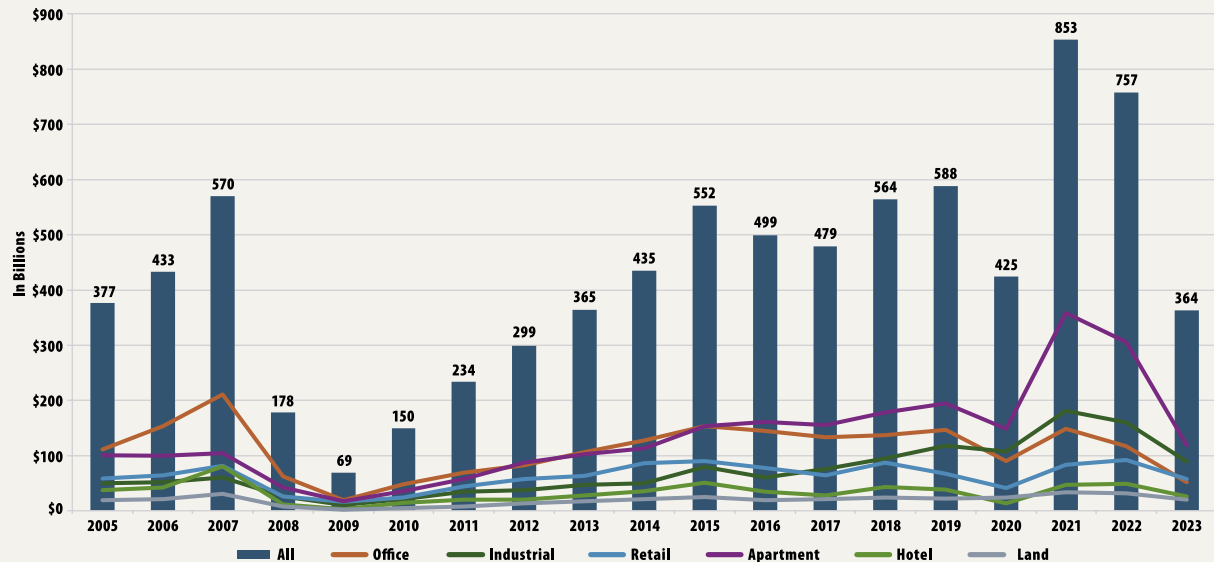


# SNAPSHOTS

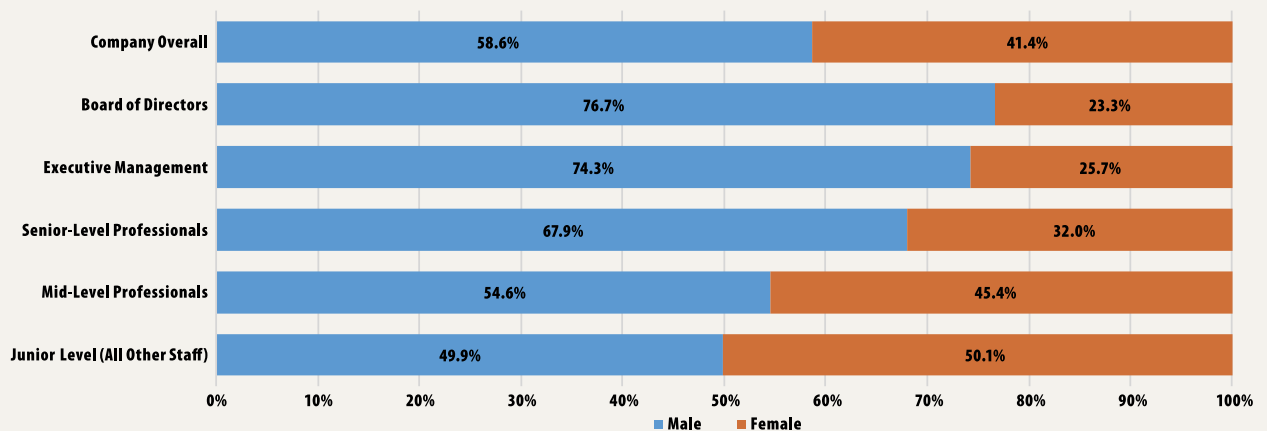
## Sales of Large Commercial Properties, 2005–2023



Source: MSCI Real Assets

Notes: Data from past periods may differ from previous reports because of updated information and methodology revisions. Limited to property deal transactions of \$2.5 million or greater. This graph is updated monthly in the [PREA Compendium](#).

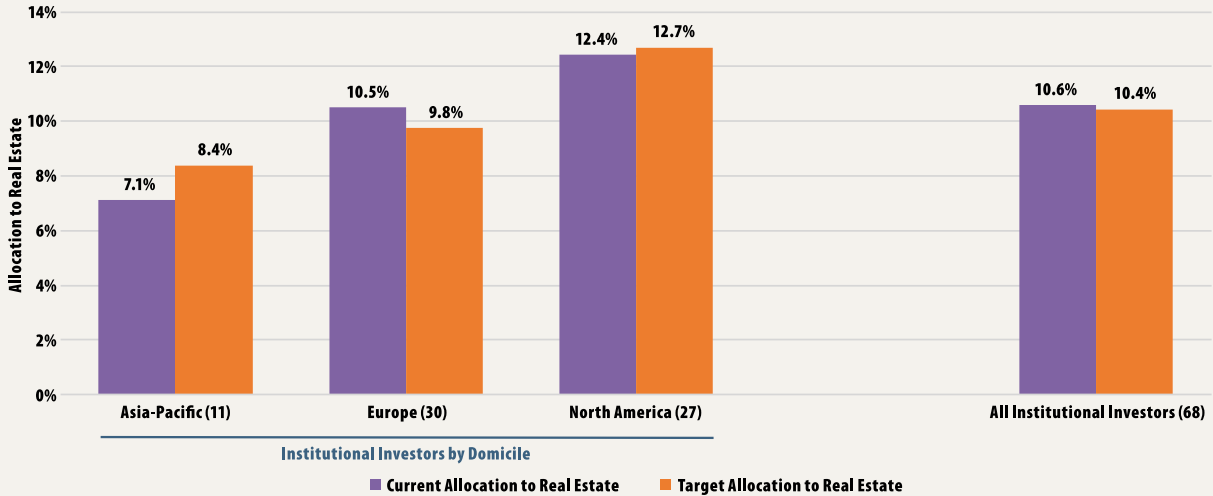
## Gender by Seniority in US Real Estate Firms



Source: Global Real Estate DEI Survey (Volume III), Jan. 2024

# SNAPSHOTS

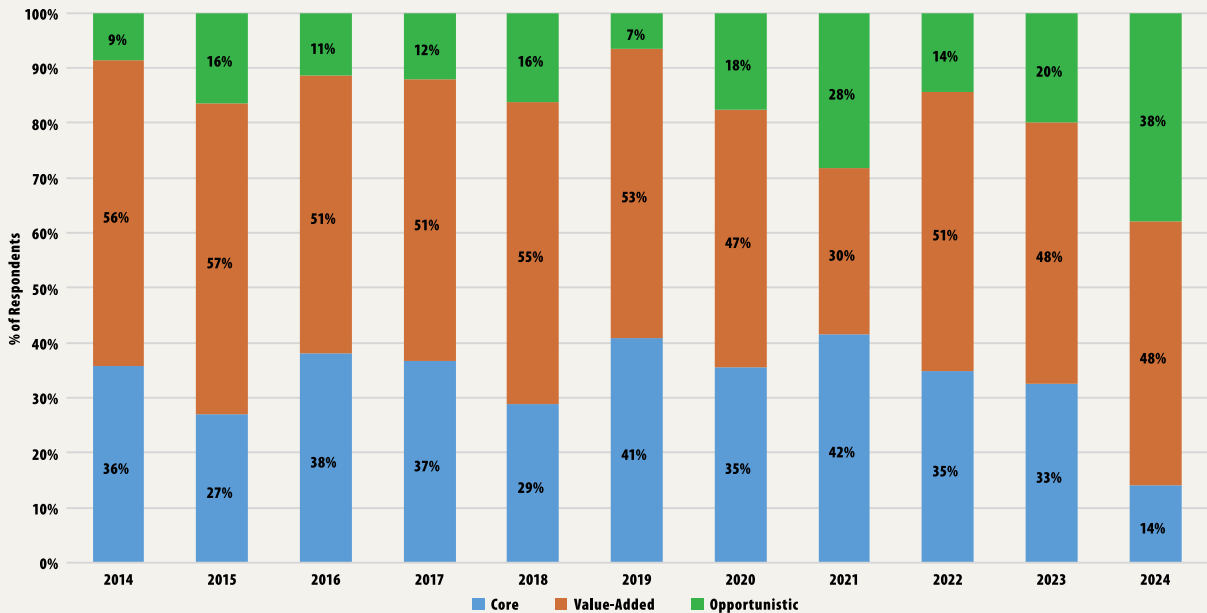
## Current and Target Real Estate Allocations



Source: PREA 2024 [Investment Intentions Survey](#)

Notes: Weighted by total AUM. Number of respondents in parentheses.

## Investors' Views on Most Attractive Investment Style in US



Source: PREA 2024 [Investment Intentions Survey](#)