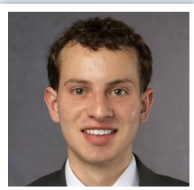
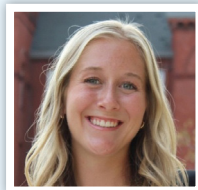


## Opening Doors to Careers in Commercial Real Estate Through Internships

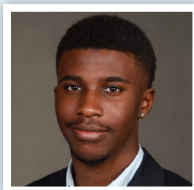
Participants from PREA Foundation-funded programs are gaining meaningful, hands-on experience at leading commercial real estate firms across the country. This summer, more than **300 interns** are taking part in these opportunities, which play a vital role in building technical skills, expanding professional networks, and exploring long-term careers in real estate.



**Marco Figueroa**  
Internships: Cerberus & Blackstone, Inc.  
NYU 26' Business Major



**Macy Verhasselt**  
Internships: Ares Management & Rockpoint  
Wisconsin School of Business, 2027



**Timothy Brown**  
Internships: IPI Partners & Artemis Real Estate Partners  
Harvard Business School, 2025



### PREA Foundation's Impact to Date



**11,800+** High school and college students exploring careers in commercial real estate.

### The PREA Foundation would like to thank the following firms for developing the next generation of talent in commercial real estate by hosting student interns in 2025.

- |                                 |                                 |                                    |                                    |                                     |
|---------------------------------|---------------------------------|------------------------------------|------------------------------------|-------------------------------------|
| AEW Capital Management          | Canyon Partners                 | Hines                              | National Real Estate Advisors      | Robinson Weeks Partners             |
| Affnius Capital                 | CBRE                            | HPS Investment Partners            | New York Life Insurance            | The Rockefeller University          |
| Almanac Neuberger Berman        | Cerberus                        | IBM                                | New York Life Investments          | Investment Office                   |
| Ambrose Property Group          | Clarion Partners                | Invesco Real Estate                | Newmark                            | Rockpoint                           |
| American South Capital Partners | Cohen & Steers                  | Jair Lynch Real Estate Partners    | NYSTRS                             | Rockwood Capital                    |
| Apollo Global Management        | Commonfund                      | JH Snyder                          | Oaktree Capital Management         | SimpleCiti Companies                |
| Ares Management                 | Community Preservation Partners | JLL                                | Office of the New York City        | South Carolina Retirement System    |
| Artemis Real Estate Partners    | Comstock                        | Johns Hopkins Endowment            | Comptroller                        | Investment Commission               |
| Avalon Bay                      | Continental Realty Corporation  | JP Morgan                          | The Ohio State University – Office | Starwood Capital Group              |
| Avanath Capital Management, LLC | The Cordish Companies           | KKR                                | of Investments                     | State of Wisconsin Investment Board |
| AXA Investment Managers         | Coro Realty                     | The Kresge Foundation              | Oregon State Treasurer's Office    | StepStone Real Estate               |
| Bank of America                 | The Davis Companies             | KSL Capital Partners               | Palatine Capital Partners          | Stream Realty Partners              |
| Barings                         | Dittmar Company                 | L&B Realty Advisors                | Partners Enterprise Capital        | Superior Real Estate Development    |
| Bell Partners                   | DivcoWest                       | L+M Development Partners           | PCCP                               | Company                             |
| Benefit Street Partners         | Driftwood Capital               | LACERA                             | Penn Office of Investments         | Terreno Realty Corporation          |
| Berkdadia                       | Dweck Properties                | LACERS                             | Penwood Real Estate Investment     | Tishman-Speyer                      |
| Berkshire Group                 | DWS Investment Management       | LAFPP                              | Management                         | TPG Angelo Gordon                   |
| Bernstein                       | Equity Residential              | LCOR                               | PGIM                               | Transwestern Investment Group       |
| BGO                             | Evercore                        | Leon Capital Group                 | PIMCO                              | Trinity Property Consultants        |
| Blackstone, Inc.                | Fairfield Residential           | Link Logistics                     | POST Real Estate Group             | UBS Asset Management Global         |
| Blue Owl Capital                | Fortress Investment Group       | MacArthur Foundation               | Pretium Partners                   | USAA Real Estate                    |
| BOK Financial                   | Gables Residential              | MacKenzie Services Company         | Principal Financial Services       | Valbridge                           |
| Bozzuto Management Company      | GEM Realty Capital              | Madison International Realty       | Prologis                           | Valley Bank                         |
| Bridge Investment Group         | GIC                             | Margaret A. Cargill Philanthropies | Property Markets Group             | Vanbarton Group                     |
| Brookfield Real Estate          | Grandview Partners              | MassPRIM                           | R. Seelaus & Co., Inc.             | VR                                  |
| Buccini Polin Group             | Green Courte Partners           | Matthew's Real Estate              | RA Management, LLC                 | Walker & Dunlop                     |
| C+C Apartments Management       | Greystar                        | Investment Services                | RL Cold                            | Wells Fargo                         |
| Cagan Management Group, Inc     | Greystone                       | MCB Real Estate                    | RMK Management Corporation         | WinnCompanies                       |
| California Endowment            | Harrison Street                 | MetLife Investment Management      | The RMR Group                      | World Bank                          |
| CalSTRS                         | Haven Capital                   | The Michael's Organization         | The Robert Wood Johnson            | Yale Investments Office             |
| Calzada Capital Partners        | Heitman                         | Morgan Stanley                     | Foundation                         |                                     |

# THANK YOU TO OUR DONORS!



## Donors' Lifetime Contributions Recognized as of June 30, 2025

### \$5,000,000 AND MORE

Dean Adler

Sonny Kalsi

### \$1,500,000 – \$2,000,000



### \$1,000,000 – \$1,499,999



### \$500,000 – \$999,999



### \$250,000 – \$499,999

Bain Capital LLC  
Beacon Capital Partners  
DigitalBridge Group, Inc.  
DWS  
Fairfield Residential  
GCM Grosvenor  
GEM Realty Capital  
Greenfield Partners  
Greystar  
H/2 Capital Partners  
Invesco  
Lionstone Investments  
Lone Star Funds  
Madison International Realty  
National Land Tenure Company, LLC  
Northwood Investors  
Nuveen Real Estate  
TPG Angelo Gordon  
UBS Asset Management Global  
Vanbarton Group  
Westminster Foundation  
Wheelock Street Capital

### \$100,000 – \$249,999

Acadia Realty Trust  
ACORE Capital  
Almanac Neuberger Berman  
American Realty Advisors  
Apollo Global Management, LLC  
ARES Management, LLC  
Linda Assante & Marc Carrasco Barings  
Bellwether Asset Management  
BLT  
Blue Moon Capital Partners, LLP  
Carmel Partners  
Cortland  
Crow Holdings Capital Partners, LLC  
Cushman & Wakefield  
The Dermot Company  
DivcoWest  
EDENS  
Ellis Partners LLC  
Kevin and Susan Faxon  
Fortress Investment Group  
Gaw Capital Advisors Ltd.  
GID  
Grandview Partners, LLC  
GTIS Partners  
HFF  
Jamestown  
Jones Lang LaSalle Americas Inc.  
LBA Realty Charitable Foundation Fund  
MSCI  
Pacific Urban Investors  
Park Madison Partners  
PCCP, LLC  
Penwood Real Estate Investment Management, LLC  
Prime Finance  
RCLCO  
Related Companies  
Rockpoint  
Rockwood Capital, LLC  
Rubenstein Partners  
The Sandra J. Zrnic Memorial Scholarship Fund  
StepStone Real Estate  
Stockbridge Capital Group  
Terreno Realty Corporation  
Torchtlight Investors  
The Townsend Group  
The Vistria Group  
Walton Street Capital  
Waterton

### \$50,000 – \$99,999

Alliance Global Advisors  
American Real Estate Partners  
Dr. Thomas Arnold  
Asana Partners, LP  
Bell Partners  
Berkeley Partners  
Berkshire Group  
Blue Vista Capital Management, LLC  
The Carlyle Group  
CrossHarbor Capital Partners  
Dune Real Estate Partners  
Elion  
EQT Real Estate  
FCP  
Fifth Wall  
Green Street Advisors  
Harbor Group International  
Hodes Weill & Associates  
IPI Partners, LLC  
Jaguar Growth Partners  
JBG Smith  
Jonathan Rose Companies  
Kirkland & Ellis, LLP  
Landmark Partners  
Long Wharf Capital, LLC  
MCB Real Estate, LLC  
Mesa West  
MetLife  
National Development  
National Real Estate Advisors  
New York Life Investors LLC  
Noble Investment Group  
Paul Hastings, LLP  
RAM Realty Advisors  
Sol Raso  
Simpson Thacher & Bartlett, LLP  
Ariel Szin  
TGM Associates  
Transwestern Investment Group  
Tristan Capital Partners  
TruAmerica Multifamily, LLC

JOIN US!



To see a full list of donors please visit our website at [preafoundation.org](https://preafoundation.org)