

## Celebrating PREA Foundation's First \$5 Million Donors Dean Adler and Sonny Kalsi

In July, a special event in New York City brought together the PREA Board, Investor Council, and the PREA Foundation Board to celebrate a milestone moment. Donors Dean Adler and Sonny Kalsi were honored with commemorative plaques for becoming the first \$5 million contributors to the PREA Foundation.



Dean addressed the attendees, sharing his heartfelt motivation for making such a generous contribution: *"In the early days of my career, I benefited greatly from the mentorship of others. Today, I am in a position to lead and mentor, helping those who want to join our industry."*

Sonny highlighted the collective impact of the Foundation: *"The Foundation is doing such amazing work and gives the industry a way to combine our efforts. Dean stepping up, and being in my home state, it just felt like the right thing to do!"*



PREA Foundation Chair, Debbie Harmon, concluded the event by encouraging others to be inspired by Dean and Sonny and join the Foundation in *Widening the Circle of Opportunity* in commercial real estate.

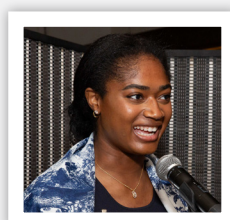


Photos: Vivian Babuts Photography

In addition to celebrating Dean and Sonny at the New York City event, two students had the opportunity to share their early career journeys and the significant impact of PREA Foundation-funded programs on their professional development.



**Joy Enaohwo**  
*PREA/SEO Real Estate Track*  
Internship: Clarion Partners  
Dartmouth College, 2025



**De-Yahna Watkins**  
*Toigo Real Estate Intensive*  
Internship: Capital R Investments  
Cornell University - Johnson School of  
Management MBA, 2025

# THANK YOU TO OUR DONORS!



## Donors' Lifetime Contributions Recognized as of August 1, 2024

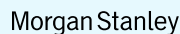
### \$5,000,000 AND MORE

Dean Adler      Sonny Kalsi

### \$1,000,000-\$2,000,000



### \$500,000-\$999,999



### \$250,000-\$499,999

Beacon Capital Partners  
DigitalBridge Group, Inc.  
DWS  
Fairfield Residential  
GCM Grosvenor  
Greenfield Partners  
Greystar  
H/2 Capital Partners  
Invesco Real Estate  
Lone Star Funds

Madison International Realty  
National Land Tenure Company, LLC  
Northwood Investors LLC  
Nuveen Real Estate  
Rialto Management Group, LLC  
TPG Angelo Gordon  
UBS Asset Management Global  
Vanbarton Group  
Westminster Foundation  
Wheelock Street Capital

### \$100,000-\$249,999

Acadia Realty Trust  
ACORE Capital  
Almanac Nueberger Berman  
Ambrose Property Group  
American Realty Advisors  
Apollo Global Management, LLC  
ARES Management, LLC  
Linda Assante & Marc Carrasco  
Bain Capital, LLC  
Barings  
Bellwether Asset Management  
Blue Moon Capital Partners, LLP  
Carmel Partners  
Cortland  
Crow Holdings Capital Partners, LLC  
Cushman & Wakefield  
DivcoWest  
EDENS  
Ellis Partners LLC  
Kevin and Susan Faxon  
Fortress Investment Group  
Gaw Capital Advisors Ltd.  
GID  
Grandview Partners, LLC

GTIS Partners  
HFF  
Jamestown  
Jones Lang LaSalle Americas Inc.  
LBA Realty Charitable  
Foundation Fund  
MSCI  
Park Madison Partners  
PCCP, LLC  
RCLCO  
Related Companies  
Rockpoint  
Rockwood Capital, LLC  
Rubenstein Partners  
The Sandra J. Zrnich Memorial  
Scholarship Fund  
StepStone Real Estate  
Stockbridge Capital Group  
Terreno Realty Corporation  
Torchlight Investors  
The Townsend Group  
The Vistria Group  
Walton Street Capital  
Waterton

### \$50,000-\$99,999

Accord Group Holdings, LLC  
American Real Estate Partners  
Dr. Thomas Arnold  
Asana Partners, LP  
Bell Partners  
Berkeley Partners  
Berkshire Group  
Blue Vista Capital Management, LLC  
The Carlyle Group  
CrossHarbor Capital Partners  
Dune Real Estate Partners  
Elion  
Exeter Property Group  
FCP  
Fifth Wall  
Green Street Advisors  
Hodes Weill & Associates  
IPI Partners, LLC  
Jaguar Growth Partners  
JBG Smith  
Jonathan Rose Companies  
Kirkland & Ellis, LLP

Landmark Partners  
Long Wharf Capital, LLC  
MCB Real Estate, LLC  
Mesa West  
MetLife  
National Development  
National Real Estate Advisors  
New York Life Investors LLC  
Noble Investment Group  
Pacific Urban Investors  
Paul Hastings, LLP  
Penwood Real Estate Investment  
Management, LLC  
Prime Finance & Prime Residential  
Employees  
Sol Raso  
Simpson Thacher & Bartlett, LLP  
Ariel Szin  
TGM Associates  
Transwestern Investment Group  
Tristan Capital Partners  
TruAmerica Multifamily, LLC

To see a full list of donors please visit our website at [preafoundation.org](http://preafoundation.org)